



LIGHT BRACKET



Installation Instructions



If additional help is required, please feel free to give us a call on +613 8592 1926 between the hours of 10am and 4pm AEST – Monday to Friday.

Emuwing Light Bracket Installation Instructions

Due to the intrusion of the hinge this product is not suitable for vehicles with passengers in the seats adjacent to the Emuwing. The Emuwing is designed as *an addition* to a storage system and should be removed if the seats adjacent to the Emuwing and Light Bracket are ever reinstated.

In previous iterations of the Emuwing, users often needed to perform drilling or cutting of the support brackets to accommodate the use of the door switch. This was necessitated by the extended length of the hinge supports and support brackets, which could obstruct the switch's proper positioning.

The door switch should be positioned approximately 15mm away from the rear of the hinge, as illustrated in the accompanying image.

In cases where the existing supports on your frame or the support brackets hinder this placement, it may be necessary to undertake drilling to achieve the desired configuration.



The hole to be drilled should have a diameter of 15mm to create a recess for the 11mm nut. This recess is essential to ensure that the nut only tightens against the Light Bracket.

Failure to create this recess may result in inadequate space between the switch in its closed position and the hinge, potentially causing the Emuwing to not close fully, which could place undue stress on its components.

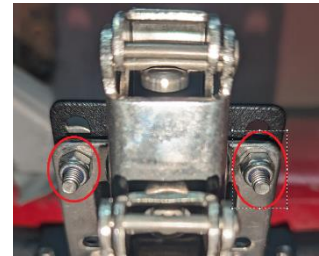
Emuwing Light Bracket Installation Instructions

Due to the intrusion of the hinge this product is not suitable for vehicles with passengers in the seats adjacent to the Emuwing. The Emuwing is designed as *an addition* to a storage system and should be removed if the seats adjacent to the Emuwing and Light Bracket are ever reinstated.

Light Bracket Installation

Begin by removing the two rear bolts from both the front and rear hinge.

You can perform this step with the gas struts still in place.



Toward the rear of the car



The Light Bracket is designed to be versatile and can be installed on either the left or right side, depending on your preference for routing the 12V power supply to accommodate the light and/or USB sockets.

Or toward the front of the car



For optimal performance, we recommend positioning the door switch at the end where you plan to route the power supply, whether it originates from the middle door pillar or the rearmost door pillar.

Align the Light Bracket with the bolt holes and securely reattach the four bolts that were removed earlier.

Tighten to a torque of approximately 4 Newton-meters (4 Nm).



If the end of the door switch needs to be bent to clear roof linings, exercise caution when doing so to avoid breaking the plastic rod.

It is preferable to open the Emuwing in a way that allows the switch to close before attempting any bending, allowing the rod to have some support.

Website: emuwing.com.au

Phone: +61 3 9017 1614

Email: info@emuwing.com.au



9/146 Northbourne Road

Campbellfield

Victoria, 3061

ABN: 84 617 251 733